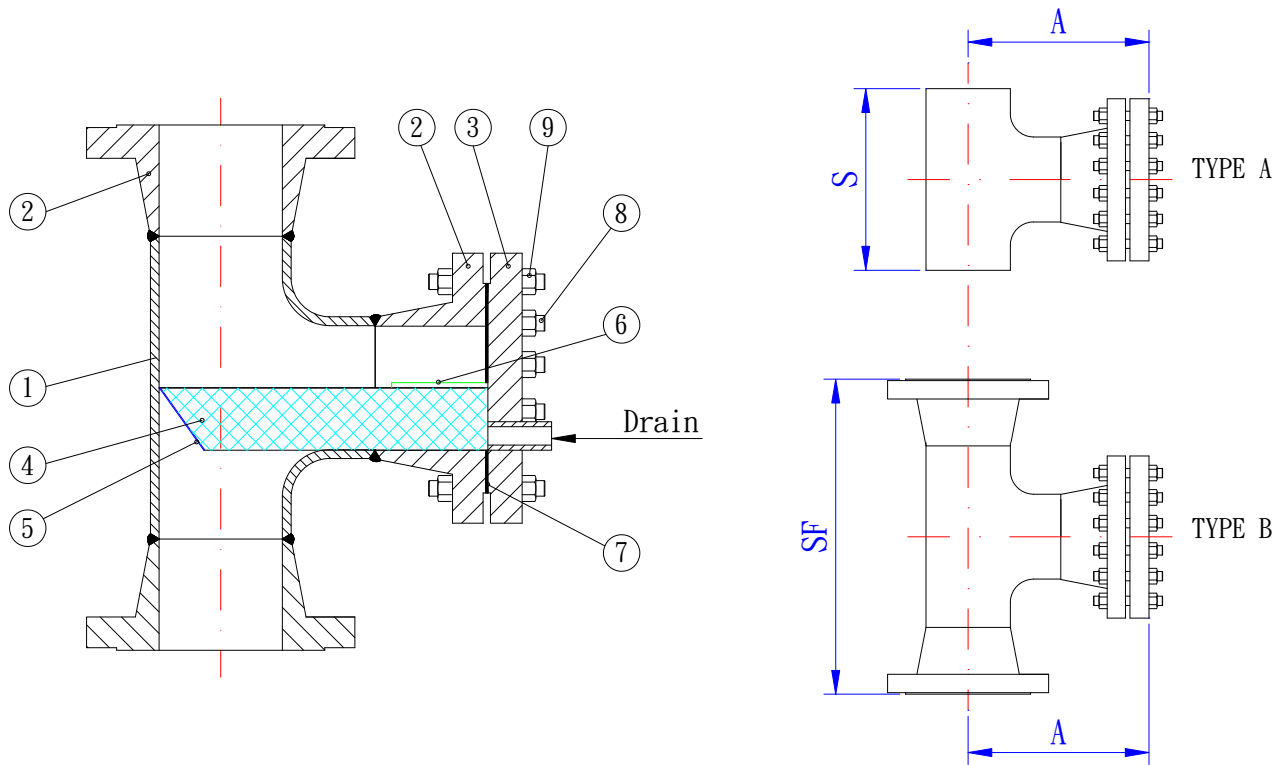


Fabricated "Bath Tub" (T-Type)Strainer

MODEL: TB ANSI Class: 150/300/600/900LB



SIZE (inches)	S	SF				A				POS.	DESCRIPTION	STD. MATERIALS
		150	300	600	900	150	300	600	900			
2"	127	254	268	286	343	148	158	177	219	1	Body	ASTM A234WPB
3"	172	312	332	351	389	182	197	216	242	2	Flange	ASTM A105
4"	210	363	382	427	453	208	225	260	279	3	Blind flange	ASTM A105
6"	286	464	483	535	579	260	281	324	353	4	Basket	S. S. 304
8"	356	560	579	636	694	311	333	382	419	5	Frame	S. S. 304
10"	432	636	668	750	813	351	385	447	485	6	Guide rods	CARBON STEEL
12"	508	737	769	833	922	403	438	492	549	7	Gasket	Spiral wound 304SS non asbestos fill O-ring CS
16"	610	864	903	979	1056	472	511	574	626	8	Bolts	ASTM A190-B7
18"	686	966	1004	1067	1157	525	565	624	689	9	Nuts	ASTM A194-2H
20"	762	1052	1086	1156	1271	571	609	676	752	Fabricated to satisfy any filtration requirements and provide a very high filtering area, therefore ensuring a very low pressure drop.		
24"	864	1169	1201	1284	1462	635	673	753	879	TEE DIMENSIONS: Acc. to ANSI B16.9 BUTT WELD ENDS: Acc. to ANSI B16.25 FLANGED ENDS: Acc. to ANSI B16.5 SPECIAL MATERIALS ON REQUEST.		

Dimensions: S, SF, A are in millimeters [mm]



K-FLOW Engineering CO., LTD.

NO. 120-1. Niasong 3rd. St., Yongkang City, Tainan, Taiwan, R.O.C.

Phone : (06)-242-3111, Fax : (06)-242-5699

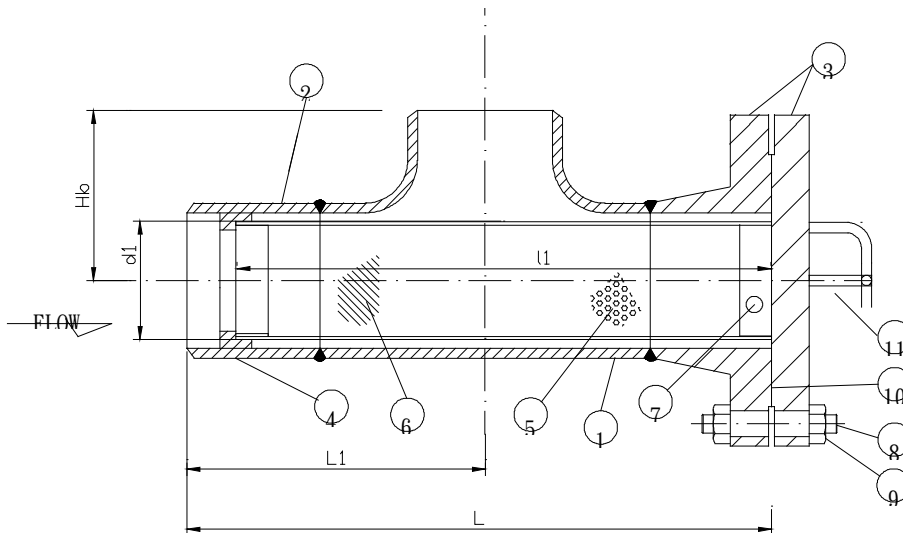
E-mail : kflow@seed.net.tw

T TYPE STRAINER Model: TS ANSI Class 150 LB

Unit :mm

NOM.SIZ E		L	L1	Hf	Hb	ELEMENT			NO.	PARTS	MATERIALS
A	B					D1	D2	I1			
25	1	230	129	101	38	22	14	200	1	TEE	A403-WP316L
40	1-½	290	163	127	57	30	20	260	2	NIPPLE	A312TP316L
50	2	300	165	135	64	38	26	270	3	FLANGE	A182-F316L
65	2-½	320	166	154	76	52	34	280	4	SEAT	316L S.S.
80	3	340	173	167	86	60	40	300	5	HOLDER OF SCREEN	316LS.S.
100	4	400	208	192	105	80	54	355	6	SCREEN	316LS.S.
125	5	470	246	224	124	110	74	420	7	HANDLE	316LS.S.
150	6	520	277	243	143	120	80	470	8	BOLTS	A193Gr. B8
200	8	600	310	290	178	170	114	550	9	NUTS	A194Gr. 8
250	10	690	355	335	216	220	148	645	10	GASKET	PTFE
300	12	820	434	386	254	250	166	770	11	HANDLE	316 L S.S.
350	14	950	526	424	279	300	200	890	Open area > 200 % of pipe cross section area		
400	16	1120	668	452	305	340	226	1060	MESH SIZE:20,30,40,60,80		
450	18	1270	767	503	343	380	254	1200	CONNECTION:SCH-10S,20S,30S,40S		
500	20	1380	836	544	381	430	288	1300	OPTIONS:100%RT,PWHT		
600	24	1580	978	602	432	530	354	1500	This is achieved by tapering the element to make a wide fluid path adjacent to the downstream outlet where reat of flow is large, and make a narrow path for fluid which flows in the opposite direction and exits via the outlet at which flow rate is small. Thus, optimum use is made of the downstream side of the casing.		

Also pressure losses are smaller and the filtering cycle is larger.



K-FLOW ENGINEERING CO., LTD.



No.120-1, Niasong 3rd St., Yongkang Dist., Tainan City 710, Taiwan (R.O.C.)

Tel:+886-6-2423111 Fax:+886-6-2425699

E-mail : kflow@seed.net.tw

www.kffilters.com.tw

“TY” TYPE STRAINER

MODEL: TY150

ANSI CL: 150 LB Q`ty: 2PCS

NPS (IN)	SCH NO.	A			L			B	W	D	ROD X ψ	N O	PARTS	MATERIALS
		150#	300#	600#	150#	300#	600#							
2	STD	127	133	143	172	178	188	64	49.2	25.4	6.4	1	TEE	ASTM A234WP304
3	STD	156	165	175	223	232	242	86	74.6	38.1	6.4	2	Flange	ASTM 304SS
4	STD	181	191	213	267	277	299	105	98.4	50.8	6.4	3	Blind Flange	ASTM 304SS
6	STD	232	241	267	356	365	391	143	150.8	76.2	9.5	4	Bolts	ASTM A193-B8
8	STD	280	289	316	438	448	477	178	198.4	100.0	9.5	5	Nuts	ASTM A194-8
10	STD	318	334	375	515	530	572	216	250.8	127.0	9.5	6	Gasket	CAF
12	STD	368	384	416	603	619	651	254	301.6	151.6	9.5	7	Screen	S.S. 304
14	STD	406	422	451	666	682	711	279	333.4	167.5	12.7	8	Stop Rod.(X ϕ)	S.S. 304
16	STD	432	451	489	718	737	775	305	384.2	192.9	12.7	9	Support rod. (X ϕ)	S.S. 304
18	STD	483	502	533	807	826	857	343	435.0	218.3	12.7			
20	STD	525	543	578	887	905	940	381	485.8	243.7	12.7			

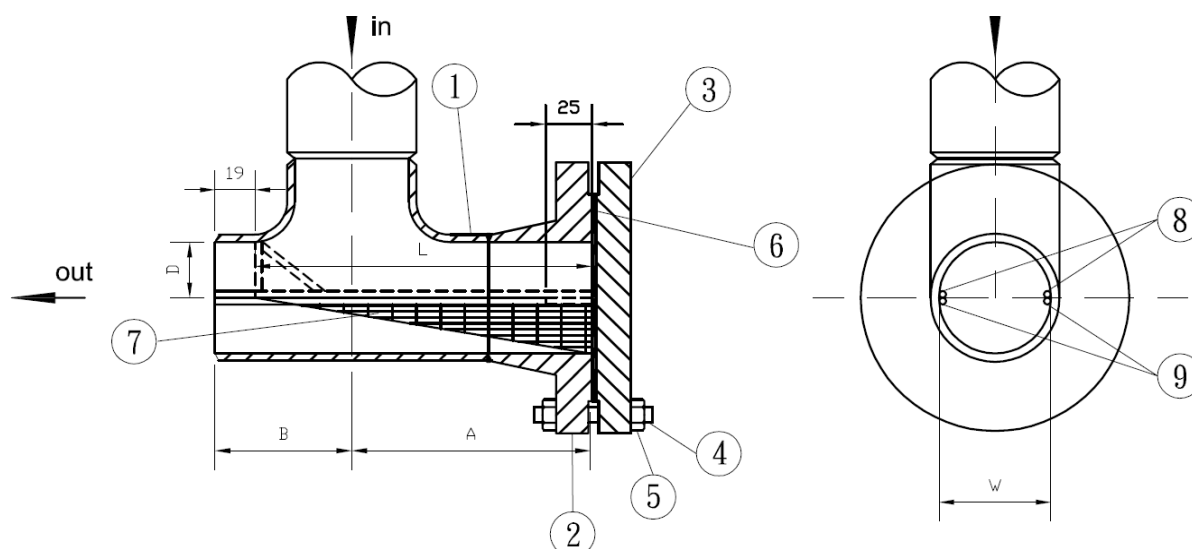
Mesh Size: 50

OPTIONS: 100%RT, PWHT

This is achieved by tapering the element to make a wide fluid path adjacent to the downstream outlet where rate of flow is large, and make a narrow path for fluid which flows in the opposite direction and exits via the outlet at which flow rate is small.

Thus, optimum use is made of the downstream side of the casing.

Also pressure losses are smaller and the filtering cycle is larger.



K-FLOW ENGINEERING CO., LTD.



No.120-1, Niaosong 3rd St., Yongkang Dist., Tainan City 710, Taiwan (R.O.C.)

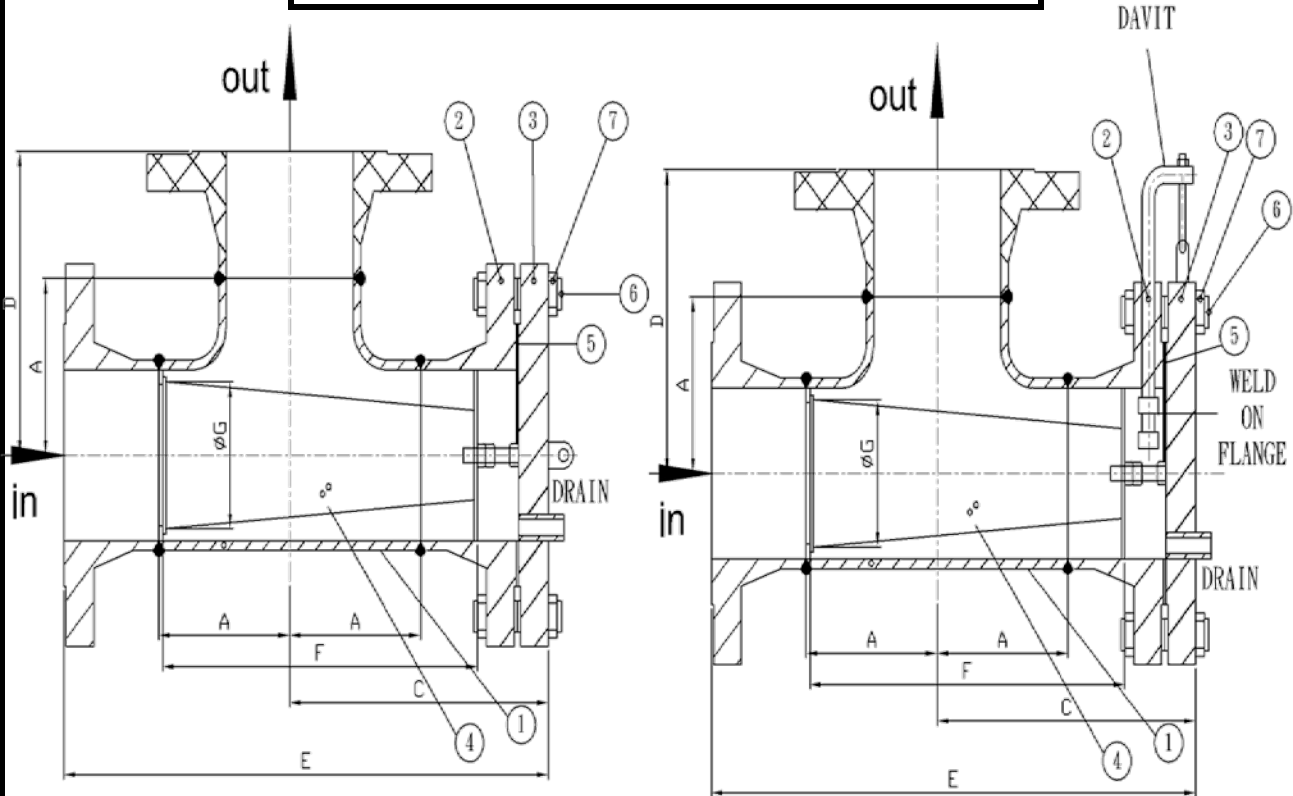
Tel:+886-6-2423111 Fax:+886-6-2425699

E-mail : kflow@seed.net.tw

www.kffilters.com.tw

TAM150-TEE STRAINER

MODEL:ANSI Class 150LB



DAVIT TYPE:12" & ABOVE

Fabricated to satisfy any filtration requirements and provide a very high filtering area, therefore ensuring a very low pressure drop.

TEE dimensions: Acc to ANSI B16.9

BUTT WELD ENDS: Acc to ANSI B16.25

FLANGE ENDS: Acc to ANSI B16.5

SPECIAL MATERIALS ON REQUEST.

Unit:mm

SIZE (inch)	A	B	C	D	E	F	G	POS.	DESCRIPTION	STD.MATERIALS
2	63.5	260	152.4	130.2	282.6	146	39	1	Body	ASTM A234WPB
2.5	76.2	298.5	174.6	149.2	323.8			2	Flange	ASTM A105
3	85.7	317.5	185.7	158.7	344.5	197	64	3	Blind flange	ASTM A105
4	105	368.3	211	184.2	395.3	248	88	4	Basket	S.S 316
5	124	432	243	216	458.8			5	Gasket	NON Asb Fiber based
6	143	470	263.5	235	498.5	330	133	6	Bolts	A193-B7
8	178	565	314.3	282.6	597	406	180	7	Nuts	A194-2H
10	216	641.3	354	320.7	674.7	495	230			
12	254	743	406.4	371.5	777.9	584	275			
14	279	819	447.7	409.6	857.3	648	302		Standard Screens	
16	305	870	474.7	435	909.6	698	345	Size	Opening	Gauge Thickness
18	343	971.5	528.6	485.7	1014.4	787	390	2"-8"	1/8 ϕ ,pitch3/16"	22
20	381	1057.3	574.7	528.6	1103.3	870	430	10"-12"	1/8 ϕ ,pitch3/16"	16
24	432	1175	638.2	587.4	1225.5	978	495	14"-24"	3/16" ϕ ,pitch1/4"	11

K-FLOW ENGINEERING CO., LTD.

No.120-1, Niasong 3rd St., Yongkang Dist., Tainan City 710, Taiwan (R.O.C.)

Tel:+886-6-2423111 Fax:+886-6-2425699

E-mail : kflow@seed.net.tw

