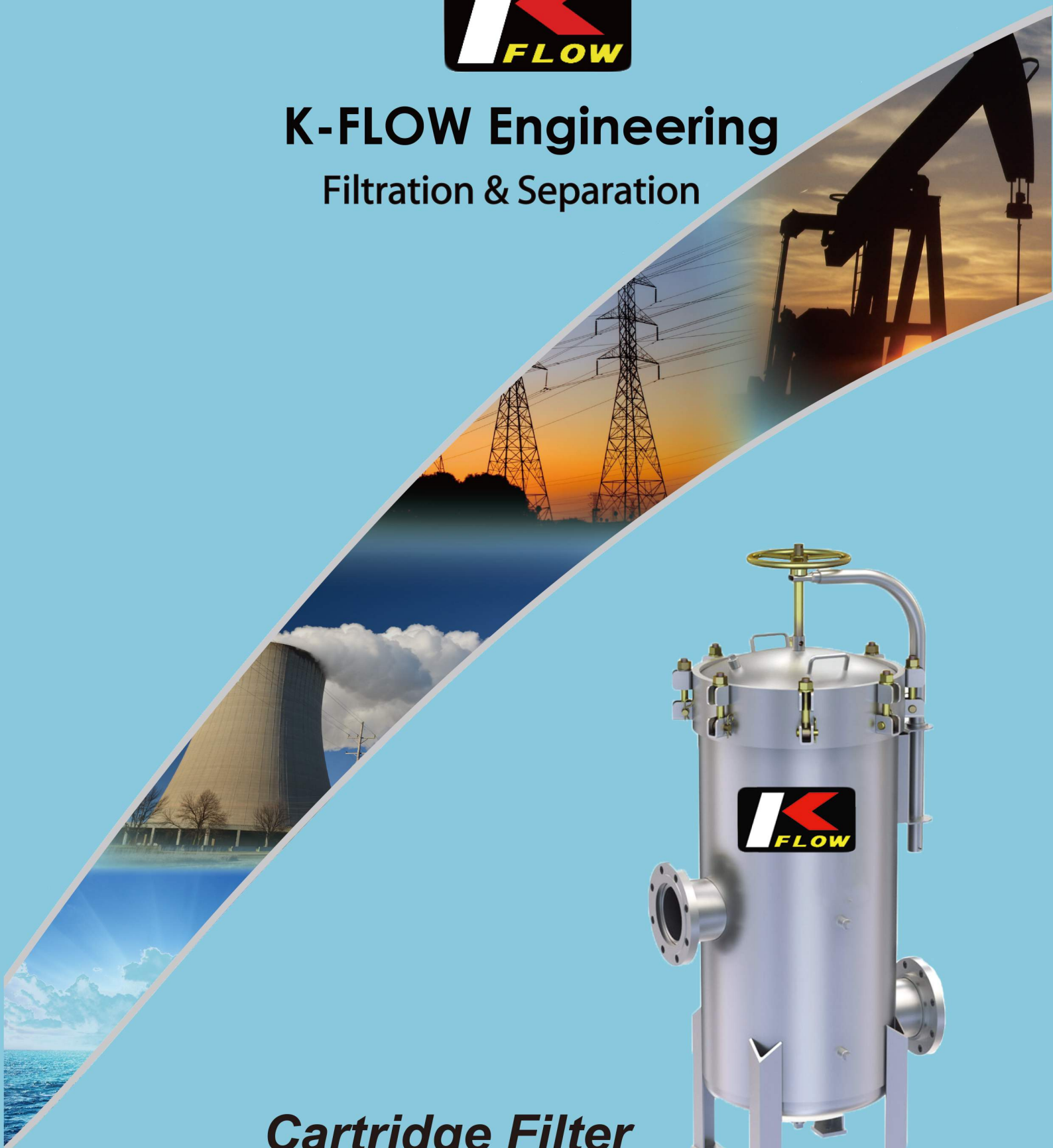




K-FLOW Engineering

Filtration & Separation



Cartridge Filter



Continuous filtration without interruption Filtration & separation specialist

Cartridge Filter

These cartridge filters offer a wide range of flow capacities and contaminant holding capabilities . The housings can accommodate from 1 to 205 cartridges around . all housings can be supplied with ASME code with or without stamp.

Standard Features

Low pressure drop

Permanently piped housings are opened without special tools and without disturbing the piping .

Machined cover gasket groove provides positive O-ring sealing .

Easy cleanability

In-line inlet & outlet .

Stainless steel internals

Standard Options

2 outlet styles

Carbon steel , 304 or 316 stainless steel housings .

ASME code design with or without stamped .

O-ring seals : Buna-N , EPR , Viton , Teflon , etc .

Accommodates 10 ,20 , 30 or 40 –inch cartridges .

Flanged connection for 3/4 through 12-inch pipe .

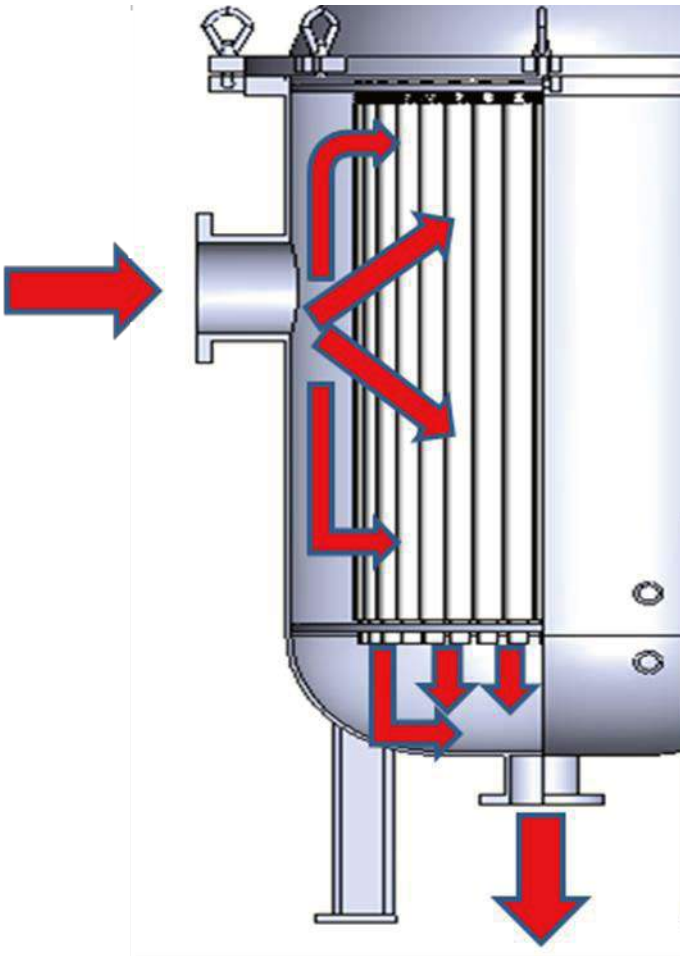
V posts or threaded center posts .

Units accepted DOE or 222 style cartridges .

How they works

Unfiltered fluid enters the housing and is distributed evenly around the cartridges ., from outside to inside . Solids are collected on the outside for easy removal . The filtered fluid then exits through the outlet pipe .

Cartridge Filter Housings



Cartridge Filter Housings

Model	CF-Light Weight Cartridge Filter, Quick Release Cover & Process Cartridge Filter, ASME Code Design, Eyenut Bolted Cover.
Material-Housing	Carbon Steel, Stainless Steel 304,316,316L
Gasket	Buna-N, EPDM, Viton Teflon Encapsulated Viton
No. of Cartridge	1,3,6,12,20,27,40,52,85,116,158,205.
Cartridge Length	10",20",30",40",Special Requirement.
Pipe Size	3/4",1",1-1/4",1 -1/2",2",3",4",6",8",10",12".
Connection	Threaded-BSPT,NPT. Flange-ANSI 150,300LB,JIS 10K,20K,DIN PN16. Sanitary-Tri-Clamp, IDF.
Pressure Rating	70psi,100psi,150psi,300psi.
Cartridge Design	Double Open End, Single Open End, Double O-Ring.
Special Option	Higher Pressure Rating, Alloy Steel, Steam or Hot Water Jacket, Duplex System, Back-flushing System, Polished Grade.

Filter Cartridge

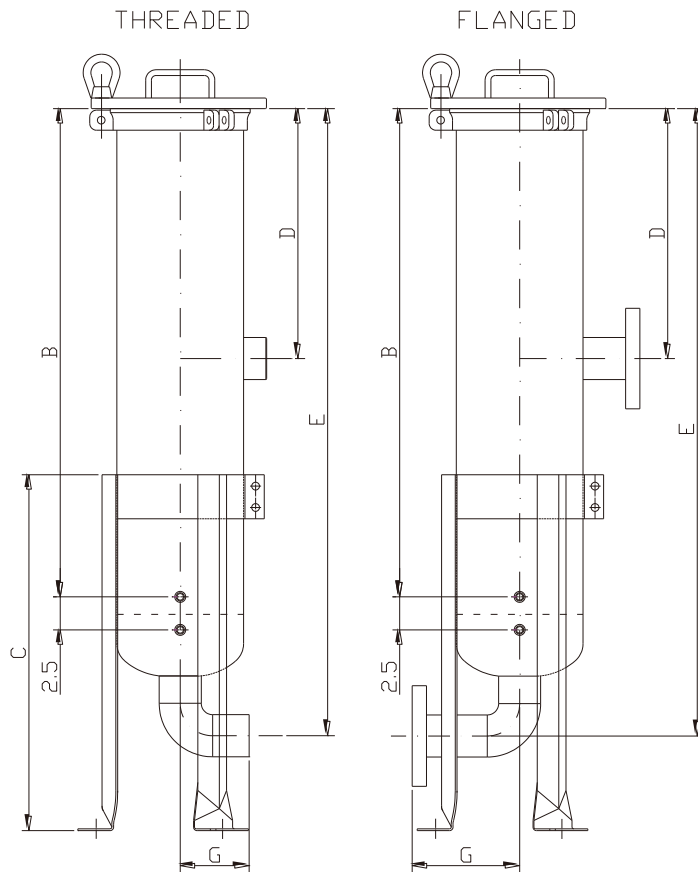
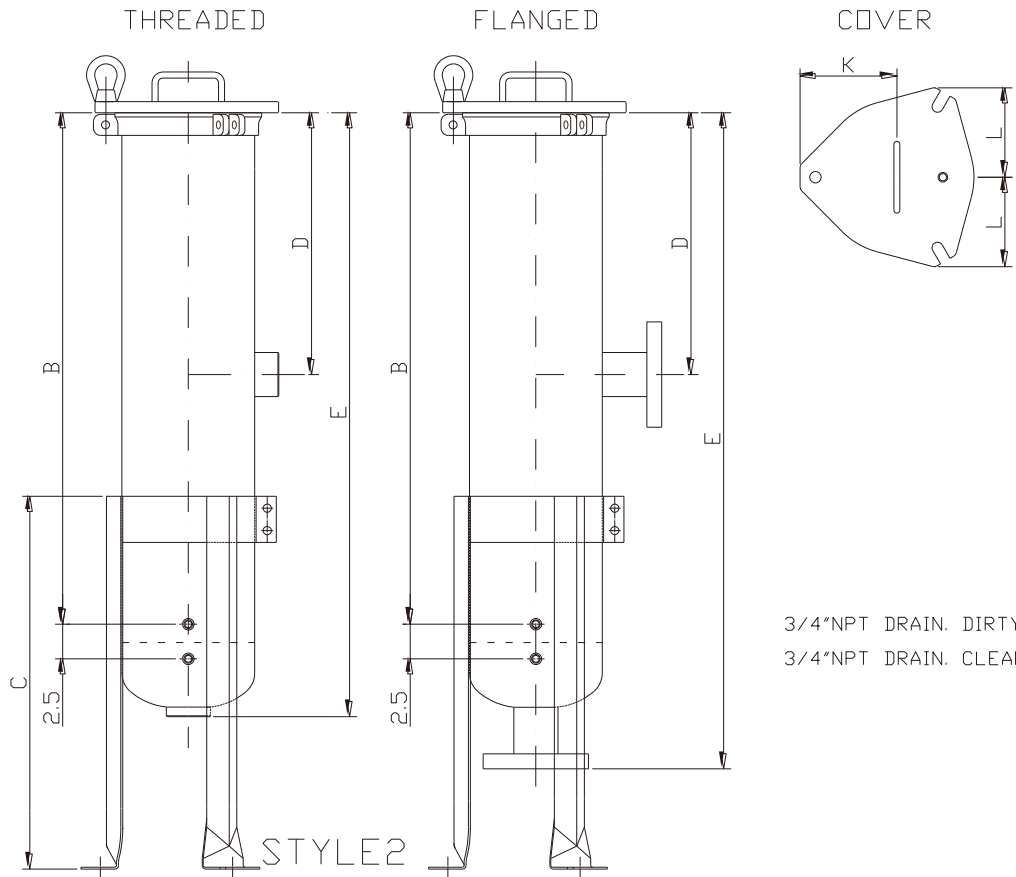
Filter Media	Polypropylene, Cotton, Rayon, Resin Bonded Nylon, Glass Fiber, Carbon Fiber, PTFE, Carbon Core, Phenolic Resin. 304,316 Stainless Steel, Ceramic, Cleanable, Carbon Core, Sintered.
Type	Depth(Wound), Surface (Pleated)
Gasket	NBR.EPDM, Silicone, Viton, Teflon
Particle remove Efficiencies in liquid	0.2,0.5,0.6,1,2,3,5,10,15,20,25,30,40,50,75,100,150,200 Micron
βRatio	10,20,50,100,1000,5000
Nominal Length	10",20",30",40".
End Cap Configuration	Double Open End, Single Open End 2-222 O-Ring, Single Open End 2-226 O-Ring with Spear.
Max. Differential Pressure	5.0 kg/cm ² (71 psi) @20°C .
Max. Working Temperature	60,80,90,120,200,260,350 °C .
Option	FDA Grade, Special Length, High Temperature.

Cartridge Filter Table

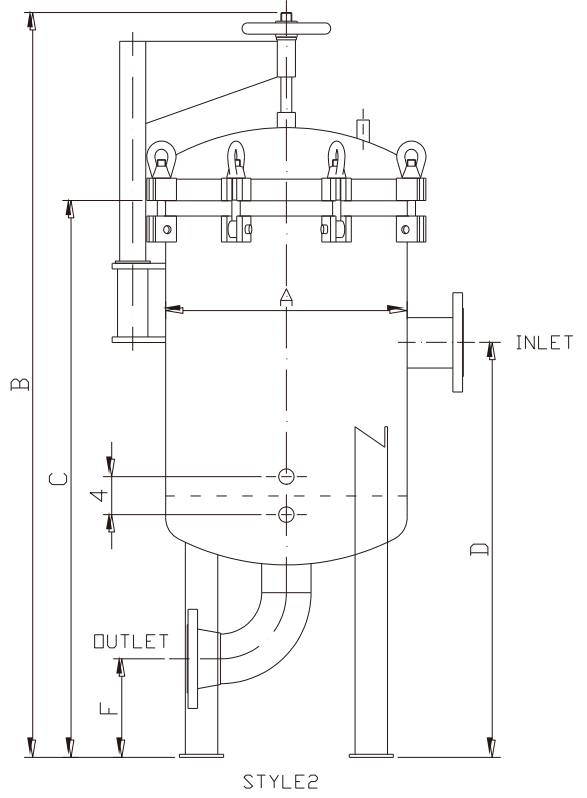
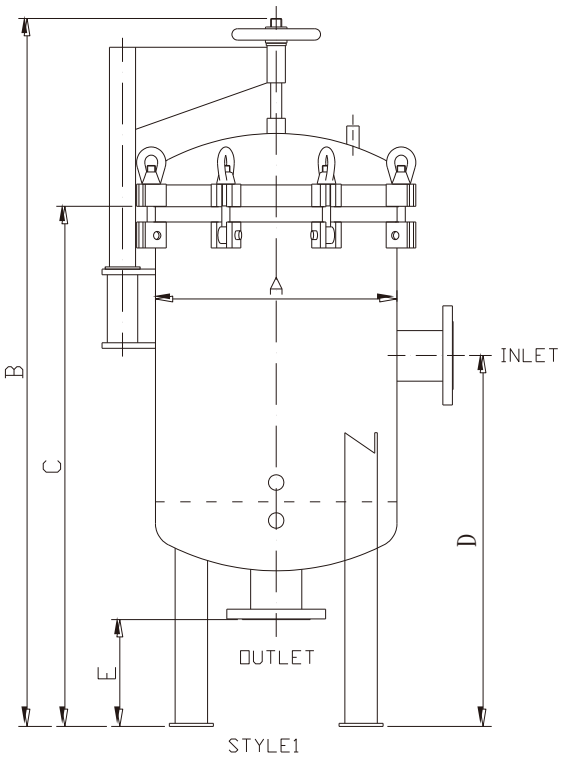
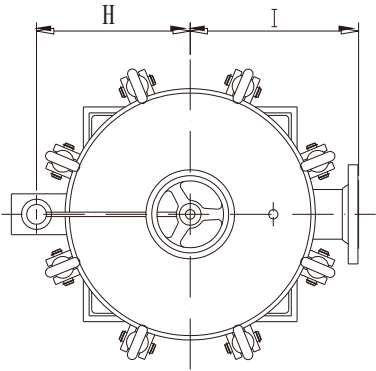
Model Number and Diameter	Cartridge Lengths	Number of cartridges	Equivalent 10-inch lengths	Available Pipe Sizes	Nominal Flow Rate, GPM/m ³ /H
Model 4	10-inch	1	1	3/4,1,1-1/4,1-1/2,2	50/11
	20-inch	1	2		
	30-inch	1	3		
	40-inch	1	4		
Model 6	20-inch	3	6	3/4,1,1-1/4,1-1/2,2,3	100/22
	30-inch	3	9		
	40-inch	3	12		
Model 8	20-inch	6	12	3/4,1,1-1/4,1-1/2,2,3	220/50
	30-inch	6	18		
	40-inch	6	24		
Model 12	20-inch	12	24	2,3,4	230/52
	30-inch	12	36		
	40-inch	12	48		
Model 16	20-inch	20	40	2,3,4	400/90
	30-inch	20	60		
	40-inch	20	80		
Model 18	20-inch	27	54	2,3,4	600/136
	30-inch	27	81		
	40-inch	27	108		
Model 22	20-inch	40	80	3,4,6	800/180
	30-inch	40	120		
	40-inch	40	160		
Model 24	20-inch	52	104	3,4,6	1200/272
	30-inch	52	156		
	40-inch	52	208		
Model 30	20-inch	82	164	4,6,8	1600/363
	30-inch	82	246		
	40-inch	82	328		
Model 36	20-inch	116	232	6,8,10	2000/454
	30-inch	116	348		
	40-inch	116	464		
Model 42	20-inch	158	316	8,10,12	3500/795
	30-inch	158	474		
	40-inch	158	632		
Model 48	20-inch	205	410	8,10,12	4500/1020
	30-inch	205	615		
	40-inch	205	820		

Dimension

STYLE1



Dimension



Model No.	Cart. Length	Pipe Size							STYLE 1				STYLE 2					
			A	B	C	D	Threaded		Flanged		Threaded			Flanged				
			E	F	E	F	E	F	G	E	F	G						
4110	1	10	3/4	4.0	11.8	18	6.0	18.7	3.5	19.9	5.0	18.9	3.5	2.1	18.9	5	4	
			1				18.6		20.0		19.3		2.5	19.2				
			1-1/4				18.6		20.0		19.6		2.9	19.6				
			1-1/2				18.6		20.2		20.0		3.3	20.0				
			2				18.5		20.1		20.6		4.1	20.6				
4120	1	20	3/4	4.0	21.8	18	11.0	28.7	3.5	29.9	5.0	28.9	5.0	2.1	28.9	5	4	
			1				28.6		30.0		29.3		2.5	29.3				
			1-1/4				28.6		30.0		29.6		2.9	29.5				
			1-1/2				28.6		30.2		30.0		3.3	30.0				
			2				28.5		30.1		30.6		4.1	30.6				
4130	1	30	3/4	4.0	31.8	18	16.0	38.7	3.5	39.9	5.0	38.9	5.0	2.1	38.9	5	4	
			1				38.6		40.0		39.3		2.5	39.3				
			1-1/4				38.6		40.0		39.6		2.9	39.6				
			1-1/2				38.6		40.2		40.0		3.3	40.0				
			2				38.5		40.1		40.6		4.1	40.6				
4140	1	40	3/4	4.0	41.8	18	21.0	48.7	3.5	49.9	5.0	48.9	3.5	2.1	48.9	5	4	
			1				48.6		50.0		49.3		2.5	49.3				
			1-1/4				48.6		50.0		49.6		2.9	49.6				
			1-1/2				48.6		50.2		50.0		3.3	50.0				
			2				48.5		50.1		50.6		4.1	50.6				
6310	3	10	1	6.0	11.8	18	6.0	18.6	4.3	19.9	6.0	19.2	6.0	5.0	19.2	4.3	2.5	
			1-1/4				18.6		20.0		19.6			19.6		2.9		
			1-1/2				18.6		20.1		19.9			20.0		3.3		
			2				18.5		20.1		20.6			20.7		4.1		
6320	3	20	1	6.0	21.8	18	11.0	28.6	4.3	29.9	6.0	29.2	6.0	5.0	29.2	4.3	2.5	
			1-1/4				28.6		30.0		29.6			29.6		2.9		
			1-1/2				28.6		30.1		29.9			30.0		3.3		
			2				28.5		30.1		30.6			30.7		4.1		
6330	3	30	1	6.0	31.8	18	16.0	38.6	4.3	39.9	6.0	39.2	6.0	5.0	39.2	4.3	2.5	
			1-1/4				38.6		40.0		39.6			39.6		2.9		
			1-1/2				38.6		40.1		39.9			40.0		3.3		
			2				38.5		40.1		40.6			40.7		4.1		
6340	3	40	1	6.0	41.8	18	21.0	48.6	4.3	49.9	6.0	49.2	6.0	5.0	49.2	4.3	2.5	
			1-1/4				48.6		50.0		49.6			49.6		2.9		
			1-1/2				48.6		50.1		49.9			50.0		3.3		
			2				48.5		50.1		50.6			50.7		4.1		
12	6	20	2	8.0	21.7	18	11.0	29.8	5.6	32.0	7.5	31.8	5.6	4.1	31.8	7.5	5.0	
			3				30.3		31.4		33.2		6.1	33.2				
	6	30	2	8.0	31.7	18	16.0	39.8	5.6	42.0	7.5	41.8	5.6	4.1	41.8	7.5	5.0	
			3				40.3		42.0		43.3		6.1	43.2				
	6	40	2	8.0	41.7	18	21.0	49.8	5.6	52.1	7.5	51.8	5.6	4.1	51.8	7.5	5.0	
			3				50.3		51.4		53.2		6.1	53.2		5.0		

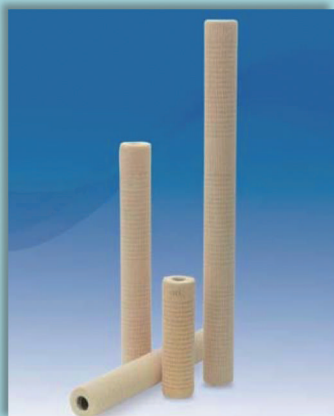
Model No.	No. of Cart.	Pipe Length	Pipe Size	A	STYLE 1 Threaded				STYLE 2 Flanged					H	I	Empty Weight (lbs)	Total Volume (cu.ft.)
					B	C	D	E	B	C	D	F	G				
12	12	20	2	12.75	59.1	43.1	33.1	12.0	50.6	34.6	24.6	4.5	5.5	9.3	10.4	370	2.2
			3						52.9	36.9	26.9	5.3	7.3			385	
			4						55.1	39.1	29.1	6.0	9.0			410	
12	30	2	2	12.75	69.1	53.1	38.1	12.0	60.6	44.6	29.6	4.5	5.5	9.3	10.4	395	2.9
			3						62.9	46.9	31.9	5.3	7.3			410	
			4						65.1	49.1	34.1	6.0	9.0			425	
12	40	2	2	12.75	79.1	63.1	43.1	12.0	70.6	54.6	34.6	4.5	5.5	9.3	10.4	420	3.7
			3						72.9	56.9	36.9	5.3	7.3			435	
			4						75.1	59.1	39.1	6.0	9.0			455	
16	20	2	2	16.0	61.1	44.1	34.1	12.0	52.6	35.6	25.6	4.5	5.5	10.9	12.0	450	3.6
			3						54.9	37.9	27.9	5.3	7.3			465	
			4						57.1	40.1	30.1	6.0	9.0			480	
20	30	2	2	16.0	71.1	54.1	39.1	12.0	62.2	45.6	30.6	4.5	5.5	10.9	12.0	475	4.8
			3						64.9	47.9	32.9	5.3	7.3			495	
			4						67.1	50.1	35.1	6.0	9.0			510	
20	40	2	2	16.0	81.1	64.1	44.1	12.0	72.6	55.6	35.6	4.5	5.5	10.9	12.0	505	5.9
			3						74.9	57.9	37.9	5.3	7.3			520	
			4						77.1	60.1	40.1	6.0	9.0			540	
18	27	20	2	18.0	62.1	44.6	34.6	12.0	53.6	36.1	26.1	4.5	5.5	11.9	13.0	480	4.7
			3						55.9	38.4	28.4	5.3	7.3			500	
			4						58.1	40.6	30.6	6.0	9.0			515	
27	30	2	2	18.0	72.1	54.6	39.6	12.0	63.6	46.1	31.1	4.5	5.5	11.9	13.0	515	6.1
			3						65.9	48.4	33.4	5.3	7.3			530	
			4						68.1	50.6	35.6	6.0	9.0			550	
27	40	2	2	18.0	82.1	64.6	44.6	12.0	73.6	56.1	36.1	4.5	5.5	11.9	13.0	550	7.6
			3						75.9	58.4	38.4	5.3	7.3			565	
			4						78.1	60.6	40.6	6.0	9.0			580	
22	40	20	2	22.0	64.1	45.6	35.6	12.0	55.6	37.1	27.1	4.5	5.5	13.9	15.0	615	7.3
			3						57.9	39.4	29.4	5.3	7.3			630	
			4						60.1	41.6	31.6	6.0	9.0			645	
			6						64.1	45.6	35.6	7.1	12.5			690	
40	30	2	2	22.0	74.1	55.6	40.6	12.0	65.6	47.1	32.1	4.5	5.5	13.9	15.0	655	9.5
			3						67.9	49.4	34.4	5.3	7.3			670	
			4						70.1	51.6	36.6	6.0	9.0			690	
			6						74.1	55.6	40.6	7.1	12.5			730	
40	40	2	2	22.0	84.1	65.6	45.6	12.0	75.6	57.1	37.1	4.5	5.5	13.9	15.0	695	11.7
			3						77.9	59.4	39.4	5.3	7.3			710	
			4						80.1	61.6	41.6	6.0	9.0			730	
			6						84.1	65.6	45.6	7.1	12.5			770	
24	52	20	2	24.0	65.1	46.1	36.1	12.0	56.6	37.6	27.6	4.5	5.5	14.9	16.0	665	8.8
			3						58.9	39.9	29.9	5.3	7.3			680	
			4						61.1	42.1	32.1	6.0	9.0			700	
			6						65.1	46.1	36.1	7.1	12.5			745	
52	30	2	2	24.0	75.1	56.1	41.1	12.0	66.6	47.6	32.6	4.5	5.5	14.9	16.0	710	11.4
			3						68.9	49.9	34.9	5.3	7.3			725	
			4						71.1	52.1	37.1	6.0	9.0			740	
			6						75.1	56.1	41.1	7.1	12.5			790	
52	40	2	2	24.0	85.1	66.1	46.1	12.0	76.6	57.6	37.6	4.5	5.5	14.9	16.0	750	14.0
			3						78.9	59.9	39.9	5.3	7.3			770	
			4						81.1	62.1	42.1	6.0	9.0			785	
			6						85.1	66.1	46.1	7.1	12.5			830	
30	82	20	2	30.0	68.1	47.6	37.6	12.0	59.6	39.1	29.1	4.5	5.5	17.9	19.0	955	14.5
			3						61.9	41.1	31.4	5.3	7.3			970	
			4						64.1	43.6	33.6	6.0	9.0			990	
			6						68.1	47.6	37.6	7.1	12.5			1035	
			8						72.4	51.9	41.9	8.3	16.0			1100	
82	30	2	2	30.0	78.1	57.6	42.6	12.0	69.6	49.1	34.1	4.5	5.5	17.9	19.0	1030	18.6
			3						71.9	51.4	36.4	5.3	7.3			1045	
			4						74.1	53.6	38.6	6.0	9.0			1060	
			6						78.1	57.6	42.6	7.1	12.5			1110	
			8						82.4	61.9	46.9	8.3	16.0			1170	
82	40	2	2	30.0	88.1	67.6	47.6	12.0	79.6	59.1	39.1	4.5	5.5	17.9	19.0	1100	22.7
			3						81.9	61.4	41.4	5.3	7.3			1120	
			4						84.1	63.6	43.6	6.0	9.0			1135	
			6						88.1	67.6	47.6	7.1	12.5			1180	
			8						92.4	71.9	51.9	8.3	16.0			1245	

Model No.	No. of Cart.	Pipe Length	Cart. Size	Pipe A	Threaded				Flanged					H	I	Weight (lbs)	Volume (cu.ft.)
					B	C	D	E	B	C	D	F	G				
36	116	20	2	36.0	71.1	49.1	39.1	12.0	62.6	40.6	30.6	4.5	5.5	20.9	22.0	1315	22.0
									64.9	42.9	32.9	5.3	7.3			1330	
									67.1	45.1	35.1	6.0	9.0			1350	
									71.1	49.1	39.1	7.0	12.5			1395	
									75.4	53.4	43.4	8.3	16.0			1460	
									79.6	57.6	47.6	9.5	19.0			1570	
116	30	2	36.0	81.1	59.1	44.1	12.0	72.6	50.6	35.6	4.5	5.5	20.9	22.0	1425	27.9	
								74.9	52.9	37.9	5.3	7.3			1440		
								77.1	55.1	40.1	6.0	9.0			1460		
								81.1	59.1	44.1	7.0	12.5			1505		
								85.4	63.4	48.4	8.3	16.0			1570		
								89.6	67.6	52.6	9.5	19.0			1680		
116	40	2	36.0	91.1	69.1	49.1	12.0	82.6	60.6	40.6	4.5	5.5	20.9	22.0	1535	33.8	
								84.9	62.9	42.9	5.3	7.3			1550		
								87.1	65.1	45.1	6.0	9.0			1570		
								91.1	69.1	49.1	7.0	12.5			1615		
								95.4	73.4	53.4	8.3	16.0			1680		
								99.6	77.6	57.6	9.5	19.0			1780		
42	158	20	2	42.0	74.1	50.6	40.6	12.0	65.4	42.1	32.1	4.5	5.5	23.9	25.0	2030	31.6
									67.9	44.4	34.4	5.3	7.3			2045	
									70.1	46.6	36.6	6.0	9.0			2060	
									74.1	50.6	40.6	7.0	12.5			2110	
									78.4	54.9	44.9	8.3	16.0			2170	
									85.6	59.1	49.1	9.5	19.0			2280	
158	30	2	42.0	84.1	60.6	45.6	12.0	75.6	52.1	37.1	4.5	5.5	23.9	25.0	2160	39.6	
								77.9	54.4	39.4	5.3	7.3			2175		
								80.1	56.6	41.6	6.0	9.0			2195		
								84.1	60.6	45.6	7.0	12.5			2240		
								88.4	64.9	49.9	8.3	16.0			2305		
								92.6	69.1	54.1	9.5	19.0			2415		
158	40	2	42.0	94.1	70.6	50.6	12.0	85.6	62.1	42.1	4.5	5.5	23.9	25.0	2285	47.6	
								87.9	64.4	44.4	5.3	7.3			2300		
								90.1	66.6	46.6	6.0	9.0			2320		
								94.1	70.6	50.6	7.0	12.5			2360		
								98.4	74.9	54.9	8.3	16.0			2430		
								102.6	79.1	59.1	9.5	19.0			2535		
48	205	20	2	48.0	77.1	52.1	42.1	12.0	68.6	44.1	34.1	4.5	5.5	26.9	28.0	2510	43.2
									70.9	46.4	36.4	5.3	7.3			2520	
									73.1	46.6	38.6	6.0	9.0			2540	
									77.1	52.6	42.6	7.0	12.5			2580	
									81.4	56.9	46.9	8.3	16.0			2650	
									85.6	61.1	51.1	9.5	19.0			2760	
205	30	2	48.0	87.1	62.1	47.1	12.0	78.6	54.1	39.1	4.5	5.5	26.9	28.0	2655	53.7	
								80.9	56.4	41.4	5.3	7.3			2670		
								83.1	58.6	43.6	6.0	9.0			2685		
								87.1	62.6	47.6	7.0	12.5			2730		
								91.4	66.9	51.9	8.3	16.0			2800		
								95.6	71.1	56.1	9.5	19.0			2905		
205	40	2	48.0	97.1	72.1	52.1	12.0	88.6	64.1	44.1	4.5	5.5	26.9	28.0	2800	64.1	
								90.9	66.4	46.4	5.3	7.3			2815		
								93.1	68.6	48.6	6.0	9.0			2830		
								97.1	72.6	52.6	7.0	12.5			2880		
								101.4	76.9	56.9	8.3	16.0			2945		
								105.6	81.1	61.1	9.5	19.0			3050		
								110.1	85.6	65.6	11.0	22.5			3180		

Type of elements

Element	Features
<p>String Wound</p> 	<ul style="list-style-type: none"> ◆ Depth filtration ◆ Range of filtration rating: 1,3,5,10,25,50 ◆ Range of filtration media: Polypropylene, Polyester, cotton, Fiber glass, Rayon, Nylon 66, Carbon fiber, PTFE, POLYPROPYLENES, etc. ◆ Features: <ul style="list-style-type: none"> ▪ Low maintenance cost ▪ Low pressure drop ▪ Suitable for high temp. and pressure process ▪ Excellent chemical compatibility ▪ Available in a wide range of materials and micron ratings
<p>Non-Woven</p> 	<ul style="list-style-type: none"> ◆ Depth filtration ◆ Range of filtration rating: 0.5,1,3,5,10,25,50 ◆ Range of filtration media: Polypropylene, Nylon, polyolefin ◆ Features: <ul style="list-style-type: none"> ▪ Grade density matrix of all polypropylene fiber ▪ No media migration ▪ Free of surfactants, binders and adhesives ▪ Thermal bonding ▪ Nominal micron rating
<p>Melt-Blown</p> 	<ul style="list-style-type: none"> ◆ Depth filtration ◆ Range of filtration rating: 0.5,1,5,10,20,50 ◆ Range of filtration media: 100% melt blown polypropylene micro fiber ◆ Features: <ul style="list-style-type: none"> ▪ 100% all polypropylene ▪ Excellent chemical resistance ▪ High dirt holding capacity ▪ High flow rate and low differential pressure ▪ FDA compiled polypropylene material

Resin Bonded (micro-fiberglass)



◆ Depth filtration

◆ Range of filtration rating:

0.5,1,3,5,10,25,50

◆ Range of filtration media:

Phenolic Resin Bonded Glass Fiber

◆ Features:

- Economical and efficient filtration for use with fluid viscosities up to 15,000 SSU (3200cks).
- Gradient density construction provides enhanced dirt holding capacity and consistent retention efficiency
- Grooved exterior provides increased surface area for greater dirt holding capacity and longer service life
- Available with polypropylene, tin and stainless-steel cores for maximum structural strength
- Maximum operating temp. up to 121°C

Pleated



◆ Surface filtration (absolute)

◆ Range of filtration rating:

0.04, 0.1, 0.2, 0.45, 0.5, 0.65, 1, 1.2, 3, 5, 10, 20, 40

◆ Range of filtration media:

PES, PSU, Hydrophobic PTFE, Hydrophilic PTFE, 100% Nylon, Polypropylene, Polyester, Fiber glass, Polyethylene, Polysulfone, Polyethersulfone, etc.

◆ Features:

- High asymmetric pore structure
- Suitable for water treatment process
- Inherently hydrophilic, good chemical compatibility
- Manufactured by ISO 9001 quality control system
- All polypropylene components meet the specifications for biological safety as per the USP for class VI-121°C plastic

Sintered Powder



◆ Depth filtration

◆ Range of filtration rating:

0.7, 0.8, 4, 5, 6, 8, 10,15,25, etc.

◆ Range of filtration media:

316L stainless steel standard. 304L stainless steel, Inconel®, Hastelloy®, Monel® on request or by process selection Additional alloys are available on request.

◆ Features:

- Absolute rated filtration
- High temperature and cleanable
- ◆ High mechanical and thermal stability

Sintered Fiber



◆ Depth filtration

◆ Range of filtration rating:

1,1.5,3,4,6,8,11,16, etc.

◆ Range of filtration media:

316L stainless steel standard. Inconel®, Hastelloy®, NiCrMo Alloy 59 and Fecralloy® on request or by process selection.

◆ Features:

- Absolute rated filtration
- Three times greater dirty holding capacity than sintered metal powder cartridges
- Four times higher flow rate than conventional metal cartridges
- No media migration or fiber release
- Exceptional mechanical strength

Sintered Mesh



◆ Surface filtration

◆ Range of filtration rating:

3.5,6,8,13,16,20,22,55

◆ Range of filtration media:

316L stainless steel standard. 304L stainless steel, Inconel®, Hastelloy® and Monel® available on request or by process selection.

◆ Features:

- All stainless-steel construction and fully welded
- Excellent mechanical strength
- Available in pleated and wrap-around arrangement
- No material migration
- Support drain construction ensure pleat strength
- Three end cap configurations available
- Back-flushable
- Special design available

Wedge wire (V type)



◆ Surface filtration

◆ Minimum slot width (in mm):

Start from 0.01

◆ Range of filtration media:

304, 304L, 316L, 317LN, Uranus B6, Monel 400, 321, Duplex, Super duplex, Monel, Titanium, Nickel Alloy

◆ Features:

- Low pressure drop
- Non-clogging: the continuous slot formed by the V-shaped surface wires ensures a two-point contact between the particles and the slot, which minimizes clogging.
- High-precision slot sizes: precise slot sizes are available to meet customer's requirements.
- Surface filtration: the V-shaped surface wires allow easy cleaning by mechanical scraping or back flushing.
- Strong construction: for most applications, the wedge wire screen is self-supporting, because of the welding at each intersection.

Main Applications

Food /Phamaceuticals/ Cosmetics

- Process water
- Water for bottle rinsing
- Perfumes
- Lotions
- Demineralized water (pre-filter)

General Process

- Automotive paints

Chemicals/Oil/Lubricants

- Up stream reverse osmosis
- Organic solvents, acids, alkalies and oxidizing agents
- Chemical solutions
- Petroleum oils

Electronic

- Magnetic paint
- D.I. and R.O. water pre-filtration

Mesh-Micron Conversion Chart

Micron	37	44	53	63	74	88	105	125	149	177	210
Mesh	400	325	270	230	200	170	140	120	100	80	70

Beta is the ratio of the number of particles greater than a given size in the influent, compared with the those of the same size or larger in the effluent.

It is related to removal efficiency as follows:

$$\% \text{ removal efficiency} = [1 - (1/\text{Beta})] \times 100$$



Filtration & Separation

K-FLOW ENGINEERING CO., LTD.

1F., No.120-1, Niasong 3rd St., Yongkang Dist., Tainan City 71042, Taiwan (R.O.C.)

Tel: +886-6-2423111 Fax: +886-6-2425699

E-mail : kflow@seed.net.tw