



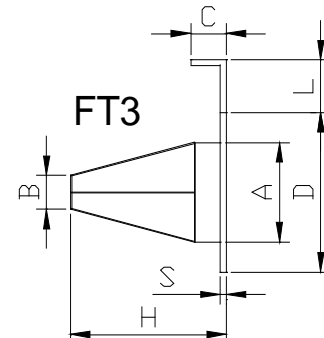
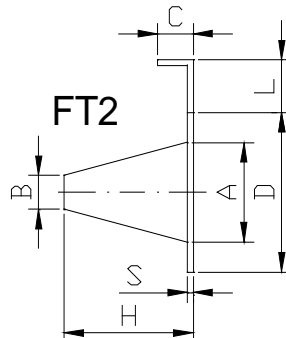
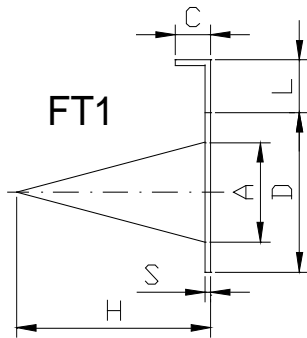
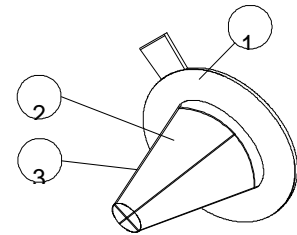
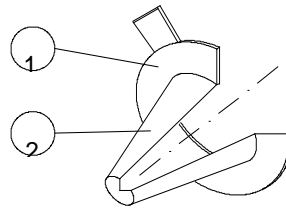
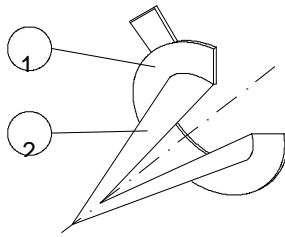
TEMPORARY STRAINERS

K-FLOW

Filters & Strainers

CONICAL TYPE TEMPORARY STRAINERS

Model CS FT1/FT2/FT3



Size (inches)	D	H	L	C	S	A	B
1-1/2"	73	60	70	20	3	33	20
2"	92	80	70	20	3	48	26
3"	127	120	70	20	3	75	44
4"	157	150	80	20	3	100	60
6"	216	230	100	20	5	150	89
8"	270	300	100	20	5	200	118
10"	324	350	110	20	5	250	149
12"	381	400	110	20	5	300	175
14"	412	450	120	20	5	332	194
16"	470	500	130	20	7	383	224
18"	534	550	130	20	7	434	250
20"	584	600	140	20	7	485	285
24"	692	650	150	20	7	587	300

Dimensions: D, H, L, C, S, A, B are in mm

POS.	DESCRIPTION	MATERIALS
FT1 1	Ring	CARBON STEEL
FT2 2	Perforated plate	ASTM 240 304
FT3 1	Ring	CARBON STEEL
FT3 2	Wire mesh	S.S.304
FT3 3	Rods	S.S.304

Conical type temporary strainers are designed for the efficient removal of solids in new pipeline start up service. They are compact and rugged and can be installed either vertically or horizontally. They can be manufactured using any kind of wire mesh or perforated plate, in carbon and stainless steel or exotically, Given dimensions are for reference purpose only, Strainers may be manufactured to any customer's standard

Strainers are designed to be installed between ANSI B16.5 flanges and meet FF, RF and RTJ facings.



K-FLOW ENGINEERING CO., LTD.

No.120-1, Niasong 3rd St., Yongkang Dist., Tainan City 710, Taiwan (R.O.C.)
 Tel:+886-6-2423111 Fax:+886-6-2425699
 E-mail : kflow@seed.net.tw